

LiveNX

End-to-end enterprise network observability platform

The challenge: Interpreting data to manage networks

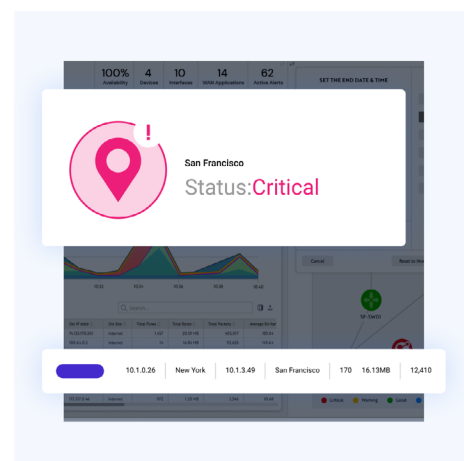
Network teams must plan, deploy, upgrade, maintain, troubleshoot, and monitor increasingly complex network environments spanning on-premises, cloud, and remote sites. These activities are highly data-driven and rely on the accurate interpretation of information coming from applications, devices, and traffic flows. As networks grow in scale and diversity, network teams are often inundated with data, making it harder to isolate issues quickly and ensure reliable performance across the enterprise.

The solution: LiveNX

BlueCat LiveNX is a network observability platform that provides end-to-end visualization, allowing enterprises to move seamlessly from a global view to a specific location, a single hop, or even an individual packet. It delivers real-time, continuous insight into network traffic based on application and user activity, enabling network teams to establish baselines, detect anomalies, and resolve issues quickly. By gathering and correlating data from every device, application, and user, LiveNX helps reduce mean time to repair while simplifying troubleshooting across multi-vendor and multi-domain environments.

With LiveNX, enterprises can manage complex hybrid and multicloud networks with automation and AI-driven insights. It unifies and simplifies the collection, correlation, and presentation of application and network data, providing insights across the network that are actionable in real time. Network teams can resolve issues faster, reduce noise, and optimize network performance.

Add-on features can further extend LiveNX's capabilities, such as delivering deeper visibility into the health and behavior of network devices across hybrid environments or providing AI-powered assistance with natural language conversations.



Benefits

- ✓ **Unified data on a single platform**
 - Correlate multiple data sets to generate views, graphs, and maps that illustrate the current state of applications and network performance.
 - Gain visibility across underlays, overlays, tunnels, and multicloud deployments (AWS, Azure, etc.), with automated device discovery and inventory creation.
- ✓ **Application monitoring and troubleshooting**
 - Establish baselines with real-time flow data capture and predictive analysis.
 - Quickly resolve complex incidents across multi-vendor and multi-domain environments with streamlined incident response workflows.
- ✓ **Network performance monitoring**
 - Visualize devices, applications, VPNs, and users.
 - Overlay performance data onto network topology for a clear operational picture and baseline performance trends.

- ✓ **Reports and dashboards**
 - Leverage simplified, customizable dashboards and reports for operations, executives, and capacity planning.
 - Monitor health, bandwidth utilization, and security anomalies with out-of-the-box and tailored reporting.
- ✓ **Integrated flow and packet-level analysis**
 - Perform end-to-end path analysis, drill down from flow visualization to packet-level detail, and accelerate root cause analysis with optimized workflows.
- ✓ **Monitoring, alerting, and management**
 - Get real-time visualization of quality of service (QoS) anomalies, traffic classification issues, and Cisco QoS metrics such as queues, thresholds, and dropped traffic.
 - Get support for detailed IP telephony monitoring for voice quality.
 - Validate WAN and SD-WAN performance across multi-vendor environments with application and path visualization.

Available add-ons

Network Resource Monitoring – Delivers deep visibility into the health and behavior of network devices across your hybrid environment—whether wireless, load balancers, data center switches, or remote locations.

LiveAssist – An AI-powered feature of LiveNX that delivers real-time insights, an AI dashboard, a conversational interface, intelligent alerts, and root cause assist to streamline troubleshooting and optimize performance.

LiveWire – Integrates with LiveNX to extend network monitoring and application troubleshooting to remote sites and branches, the WAN edge, and data centers with high-performance packet capture and analysis.

LiveNCA (Network Configuration Automation) – Integrates automated device discovery for a comprehensive multi-vendor asset inventory repository.

Security Insights – Transforms LiveNX and LiveWire flow and packet data across the data center, cloud, and edge into real-time intelligence that enriches SIEM and extended detection and response tools.

Features



Achieve network-wide visibility

Get complete visibility into network and application performance across multi-vendor, multi-domain, and multicloud networked environments for increased productivity and a better user experience.



Optimize performance

Proactively identify, troubleshoot, and quickly resolve network and application performance issues, regardless of where they occur, to speed time to repair, avoid costly downtime, and meet business needs.



Unify network data

Simplify monitoring and accelerate troubleshooting by unifying key types of network monitoring data, including network packets, on a single platform across the network, freeing network teams to focus on strategic work.

Learn more about [LiveNX's technical specifications](#).

BlueCat's Intelligent Network Operations (NetOps) solutions provide the analytics and intelligence needed to enable, optimize, and secure the network to achieve business goals. With an Intelligent NetOps suite, organizations can more easily change and modernize the network as business requirements demand.

Headquarters

4100 Yonge St. 3rd Floor, Toronto, ON, M2P 2B5
Phone: 1-416-646-8400 | 1-866-895-6931

[bluecat.com](#)

Next steps

Discover how LiveNX's end-to-end visualization can help you better manage your network.

[Learn more](#)