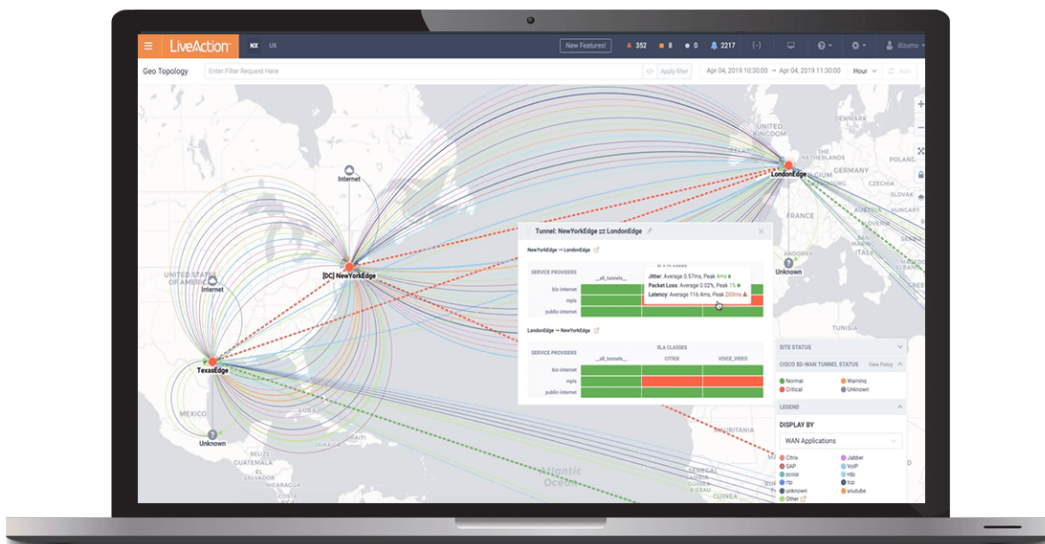


Modernize Your Network For Faster, Better Business Outcomes

Enterprises understand that their network is no longer a collection of technology assets, but a core component to business success.

Transforming network operations is not easy.

To deliver maximum value and easily support future initiatives organizations must: ensure the network meets business objectives, have full network and application visibility for better decisions, and reduce the cost to operate the network.





UNMATCHED NETWORK VISIBILITY

LiveAction provides end-to-end visibility of network and application performance from a single pane of glass.

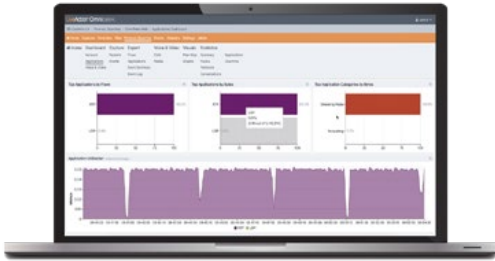
LiveAction allows companies to manage large and complex networks by unifying and simplifying the collection, correlation, and presentation of application and network data making it actionable for network management teams. With our unified platform, enterprises are able to eliminate the cost and complexity of managing point solutions, reduce meantime to resolution, and save days documenting activity by leveraging automated reporting. Customers become more proactive by leveraging network analytic and AI/ML techniques to identify and fix issues before an application or network problem impacts the business.

ACCELERATE PERFORMANCE

Common performance issues have a far-reaching impact on the entire business.

Challenges to digital business initiatives include sprawling network and application management tools that operate in silos, poor application performance, ineffective troubleshooting, incomplete reporting and analysis, poor planning and deployment practices, and limited network preparedness. This all adds up to limited network and business agility.

LiveAction addresses these challenges by enabling organizations to reduce both internal and customer downtime, making sure SLAs are met even as business requirements evolve. Enterprises can proactively plan for any changes in the network, whether a new SD-WAN deployment, critical business application, or migration to the public cloud. What's more, NetOps teams are now effectively equipped to address the modern challenges of the ever-changing network. Here are a few of the network challenges LiveAction helps enterprises solve.



Application Performance Optimization

For large enterprises, millisecond delays in application responsiveness can make or break a company. App-centric approaches to managing performance are incomplete. LiveAction bridges this gap using the advanced analysis of packet, flow and DPI-enhanced metrics to improve the way NetOps teams comprehend, resolve and optimize application performance issues.

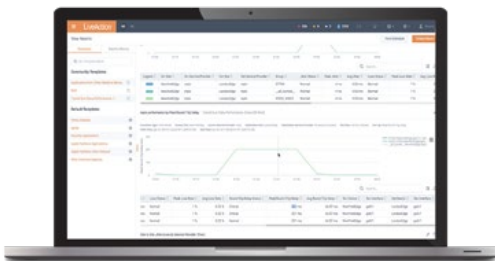
[Download the ebook](#) →



Data-Driven Change Initiatives

Strategic change efforts are often delayed, derailed or more costly due to the necessary network infrastructure improvements required before operational changes can be delivered to the enterprise. LiveNX's time-based analysis of network performance state enables management teams to report on performance deviations that occur so that technology improvements are rolled out successfully, on-time and on budget.

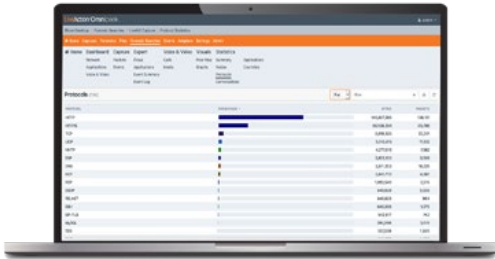
[Download the ebook](#) →



Advanced Reporting and Analytics

Network performance baselining and trending requires the review of an overwhelming amount of disparate information. Failure to perform and act on these reports could result in an over-investment in capacity and switching hardware to deliver a high availability network. LiveNX delivers an advanced analytics platform to provide reports and analysis on nearly every aspect of a network's performance giving network management teams a cohesive view of performance metrics throughout the network.

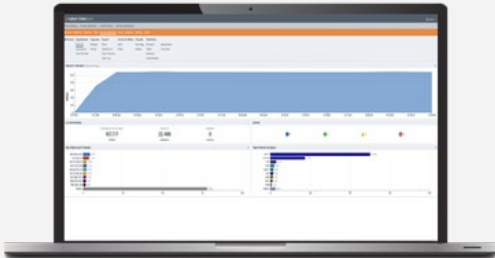
[Download the ebook](#) →



Managing for Network Readiness

When business needs inevitably shift, the network must be ready to adapt to those changes. If the network isn't properly maintained, business agility could be impacted. By performing continuous monitoring with LiveNX, network management teams gain clear insight into priority updates and upgrades needed for the network.

[Download the ebook](#) →

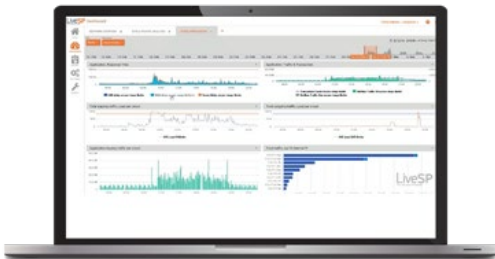


Accelerated Network Troubleshooting

Tracking down the root cause of performance issues frequently requires the use of multiple disparate tools to diagnose and resolve. LiveNX accelerates the identification and resolution of the most difficult network performance issues with visibility across the entire network in a single solution.

[Download the ebook](#) →

A big box retailer **reduced MTTR from 4 hours to under 1 hour** with LiveAction solutions saving thousands of hours while improving customer satisfaction and productivity.



Operational Excellence

Maintaining efficiency in IT operations is a challenge for organizations of all sizes. Inefficiencies in performance management and troubleshooting processes cause extra or inaccurate work, which limits an IT team's ability to control these costs. By performing the majority of the network management tasks within LiveNX, Network Operations teams can leverage this single source of the truth to perform tasks faster and more accurately.

[Download the ebook](#) →

Leading FinServ Provider **saves over \$90K per year** by consolidating multiple monitoring tools down to LiveNX.



TRANSFORM YOUR BUSINESS

LiveAction solutions deliver the network performance your organization demands.

LiveAction is the only solution to provide end-to-end network visibility in a single pane of glass.

Network Performance Management

- Achieve network-wide visibility
- Optimize performance
- Unify network data

- LiveNX
- LiveNA
- LiveWire

Network Analytics/AIOps

- Application performance optimization
- Anomaly identification
- Proactive management of application SLAs

- LiveNX
- LiveNA

Network + Application Troubleshooting

- Achieve detailed visibility
- Accelerate troubleshooting
- Optimize security and compliance

- LiveCapture
- LiveWire
- Omnipeek

About LiveAction

LiveAction supports the entire network including campus, branch, datacenter, public cloud, WAN, and SD-WAN. We leverage the broadest array of telemetry including NetFlow, Packet, SNMP, API, and IPIFIX. While remaining vendor agnostic, LiveAction supports all key network vendors.

LiveAction has the enterprise scalability that can consume the millions of performance data points sent every second by your network. Our unmatched data fidelity and the finest level of granularity gives you end-to-end visibility at the global level but lets you drill down to a location, a single hop, or packet. LiveAction gives you all of this with both real-time access to this data as well as historic playback, without compromise. LiveAction provides enterprises the confidence that their network is meeting business objectives, full network visibility for better decisions, and reduced cost to operate the network.

Learn More

To learn more and see how LiveAction delivers unmatched network visibility

Contact us

