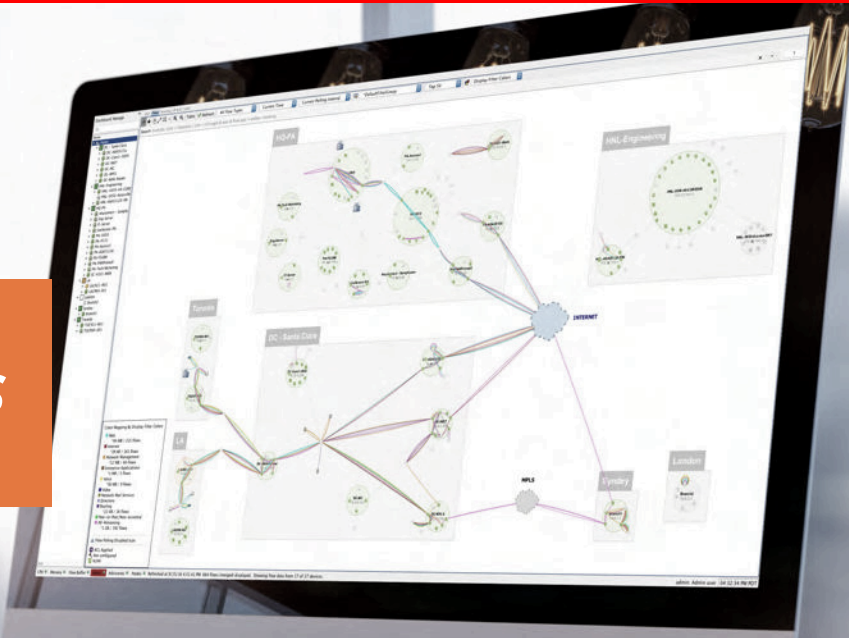


LIVEACTION and PALO ALTO NETWORKS Solution Brief

LiveAction



LiveAction™ has integrated with Palo Alto Networks® to enable a powerful solution that provides a highly visual, contextual display for analyzing traffic patterns across enterprise networks. By delivering this powerful real-time and active replay visualization technology, LiveAction enables security and network operations staff to increase their understanding of complex security incidents and network impacts.

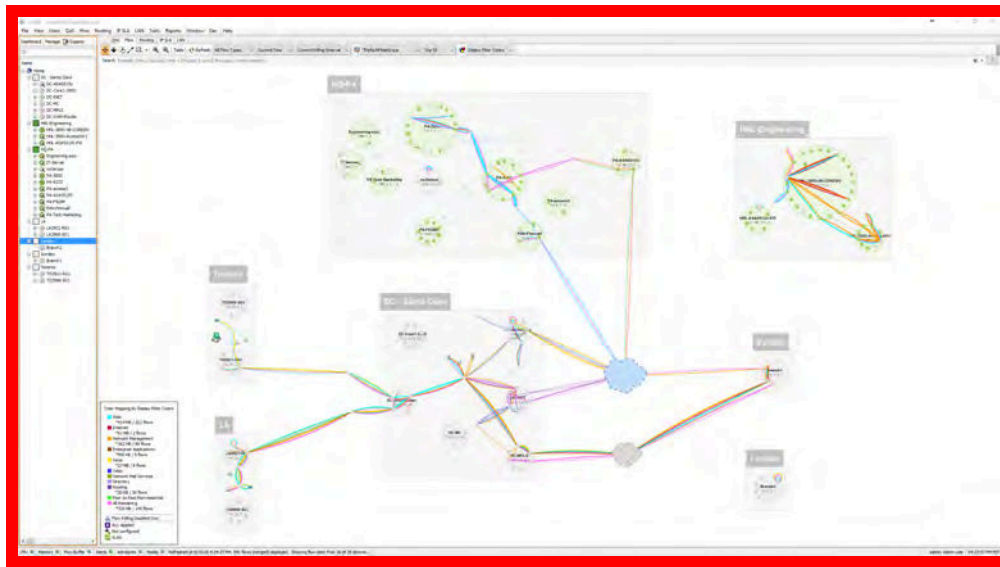
The Challenge

In today's ever-evolving enterprise networks, gaining a deep understanding of the security requirements of the network and identifying and stopping potential breaches or threats requires significant time and highly skilled resources. The level of complexity further increases as network traffic becomes more encrypted. Ultimately, IT staff needs to gain insight into how traffic flows across the network, and find the path that applications take between the users and the supporting IT infrastructure, to best understand performance, threat and risk dynamics.

Integration between Palo Alto Networks Next-Generation Firewall and LiveAction's LiveNX™ and LiveUX™ management platforms enables the IT network and security teams to gain unprecedented visualization, combining real-time and historical insight into traffic flows. This can greatly reduce the time to identify breach points and accelerate remediation activities. As a result, incident response capabilities are dramatically improved with comprehensive forensic analysis capabilities enabled through flexible, on-demand, historical session-replay capabilities.

Understanding Resource Availability

The LiveAction solution further enhances security operations by providing a more holistic view into application and service availability by enabling a better understanding of traffic patterns, the availability of each application or service being delivered across the enterprise network, and internet-connected deployment. Many security breaches can impact service availability and performance before they become widespread or even known. Full-time monitoring of critical service availability can provide the security and network teams with early warning of emerging incidents before they spread across the network.



Industry-Leading Visualization

Leveraging the value of correlating network and traffic visibility through the integration of LiveUX and LiveNX with Palo Alto Networks NGFW improves situational awareness with early warning of emerging issues, and simplifies and accelerates incident response by providing a deeper level of visibility into network traffic and application flows.

LiveNX enables deep insight into end-to-end network traffic and related application flows, enabling network and security managers to investigate anomalous activities. LiveUX monitors the availability of web-based applications and services, enabling quick identification of emerging availability issues that may indicate an emerging security incident, such as a DDoS attack or the proliferation of a bot or malware infection.

Integration Architecture

The integration between Palo Alto Networks devices and LiveNX is over standard protocols of NetFlow and the Simple Network Management Protocol (SNMP). Palo Alto Networks devices can export NetFlow information to LiveNX.

Detecting, Visualizing and Blocking Malicious Traffic

Palo Alto Networks devices alert based on traffic that is destined to known malicious sites. With the information contained in these alerts, LiveNX can be leveraged to further analyze specific, suspicious traffic flows with deep visualization of the path and behavior, as well as replay of the flow. LiveNX enables the network and security teams to trace and visualize any network flow, including protocols, applications and devices, and precisely how they traverse the network to understand when and how the network or specific device's behavior changed. This streamlines IT operations by enabling the network and security teams to understand the scope of the infiltration from a single visualization point, rather than coming at it from two different tools. The enhanced visibility gained from LiveNX empowers both

the network and security teams to identify threat sources, understand breach implications, reduce remediation time, and ultimately make better decisions about which actions to take.

LiveAction empowers security and network teams to:

- Gain insight into the extent of shadow IT by taking advantage of the intelligent deep packet inspection analysis of Palo Alto Networks.
- Find out what occurred with historical traffic flow replay to support incident response activities.

About LiveAction

LiveAction develops IT visibility solutions designed to simplify network management. Initially developed to aid the US Department of Defense in the operation of its networks, LiveNX (Network Experience) features an innovative visual display, real-time big data analytics and deep control of routers and switches for unparalleled network administration.

Find out more at www.liveaction.com

About Palo Alto Networks

Palo Alto Networks is the next-generation security company, leading a new era in cybersecurity by safely enabling applications and preventing cyber breaches for tens of thousands of organizations worldwide. Built with an innovative approach and highly differentiated cyberthreat prevention capabilities, our game-changing security platform delivers security far superior to legacy or point products, safely enables daily business operations, and protects an organization's most valuable assets.

Find out more at www.paloaltonetworks.com

LiveNX and LiveUX are trademarks of LiveAction.



4401 Great America Parkway
 Santa Clara, CA 95054
 Main: +1.408.753.4000
 Sales: +1.866.320.4788
 Support: +1.866.898.9087
www.paloaltonetworks.com

© 2017 Palo Alto Networks, Inc. Palo Alto Networks is a registered trademark of Palo Alto Networks. A list of our trademarks can be found at <http://www.paloaltonetworks.com/company/trademarks.html>. All other marks mentioned herein may be trademarks of their respective companies. liveaction-tpsb-110116