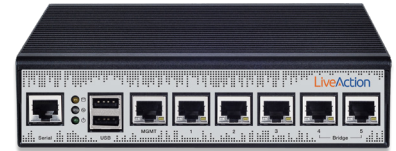


LiveWire

Mini appliance. Mini price.
Maximum network visibility.



The Challenge™

Small-to-medium sized businesses (SMBs) and remote sites need powerful, affordable solutions for real-time visibility into network and application performance.

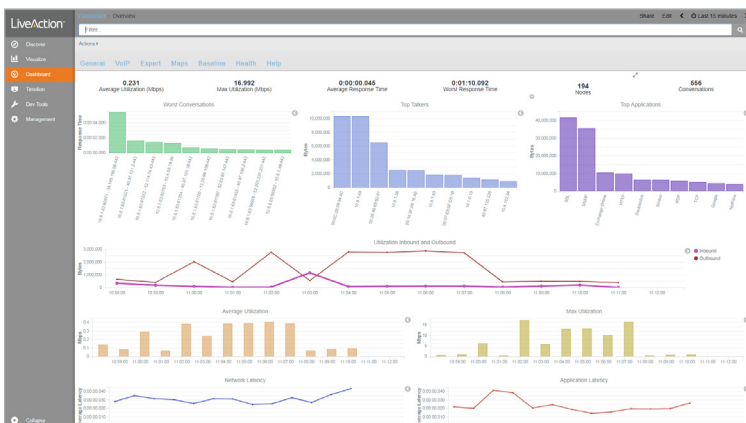
The Solution

Already the industry's most compact and cost-effective network monitoring and troubleshooting appliance, LiveWire™ enables anyone responsible for 1G networks in most SMBs and remote enterprise offices to visualize, detect, pinpoint, diagnose, and manage network issues with a single low-cost solution.

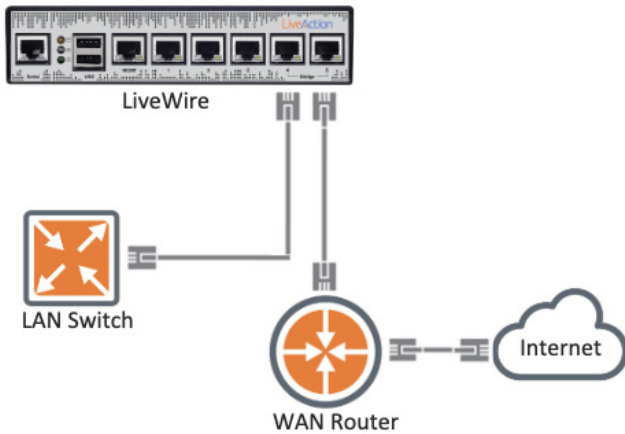
LiveWire is a compact, fanless, quad-core, six-port mini-appliance that provides all the benefits of LiveAction's enterprise datacenter solutions to networks operating at 850 Mbps or less. Built with enough storage to hold days, weeks, or months of network data, depending on network traffic:

Benefits

- Saves money by having an affordable network monitoring appliance at every location
- Provides remote troubleshooting and reporting capabilities 24x7 without requiring travel
- Reduces mean time to resolution (MTTR) by providing advanced troubleshooting capabilities at the network edge
- Increases ROI of Omniclient deployments through use of OmnipEEK and Multi-Segment Analysis
- Troubleshoot VoIP calls with LiveNX Flow and Packet analysis



LiveWire has built-in, long-term reporting that starts the instant you connect it to your network. Simply point your browser at LiveWire to see detailed analytics presented in intuitive dashboards. It also aggregates the data from multiple LiveWires into a single database for long-term reporting and centralized data access across multiple locations. View and analyze your data easily and intelligently with the customizable dashboards. Additionally, a version OmnipEEK® is included for performing detailed, root-cause analysis down to the packet level.



Long-Term Reporting

Placed inline to an Internet connection, LiveWire automatically begins collecting network statistics and trend data for immediate display and long-term reporting.

Users can instantly access in-depth analytics on network activity such as bandwidth utilization, application response times, flow volume, packet types, expert events, security events, and VoIP calls.

RECOMMENDED USES		
Remote Office Networks	Managed Service Providers	Small Businesses
<ul style="list-style-type: none"> Deploy the industry's first affordable network monitoring and diagnostics solution for remote offices Collect key network performance indicators and display the results in your web browser Eliminate travel to remote locations for network troubleshooting 	<ul style="list-style-type: none"> Provide services to more customers with the same staff Offer new and differentiated service offerings Respond to customer issues instantaneously from any location 	<ul style="list-style-type: none"> Understand your network performance through intuitive, web-based dashboards Make key network trouble-shooting data available to remote network professionals Install and configure LiveWire in less than 5 minutes

LiveWire	VoIP Disabled	VoIP Enabled
Forensic Capture (CTD)	Up to 850 Mbps	N/A
Real-time Analysis	Up to 70 Mbps	Up to 60 Mbps
Network Monitoring (LiveNX)	Up to 125 Mbps	Up to 100 Mbps
Memory	16 GB	
Storage Capacity	1 TB SSD	
Device Dimensions / Weight	7-by-1.7-by-5.7-inches; 2.64 lbs	
Long Term Reporting (LiveNX)	Yes	
Omnipeek for LiveWire	Yes	
Capture Engine for Omnipeek	Yes	
VoIP Analysis	Yes	