



LiveNX 6.2.0 – Monitor of Monitors

INSTALL & USER GUIDE

LiveAction, Inc.

3500 WEST BAYSHORE ROAD

PALO ALTO, CA 94303

Introduction

LiveAction helps simplify the network by delivering continuous insight, service assurance, and precise control of your enterprise network infrastructure. LiveAction does all of this through its platform called LiveNX. LiveNX is a Network Visualization and Analytics platform which provides real time visualization for situational awareness, patented network management, QOS control and historical traffic playback, unlimited scalability of network metadata based on time-series big data back-end and continuous Insights for modeling, topologies and automation driven by machine learning.

With the LiveNX 6.2.0 release, the key operational capabilities of the NX platform is to ease device discovery, alerting, reporting and integration with the Cisco Digital Network Architecture and other multivendor environments. Also, introducing in this release, is the LiveNX Monitor of Monitors or (MoM).

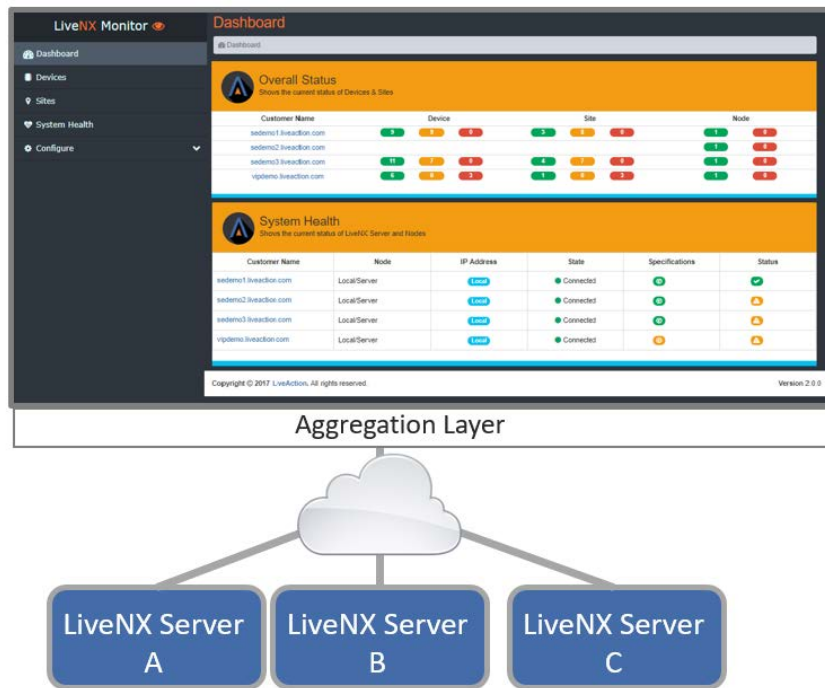


Figure 1: LiveNX 6.2.0 MoM single pane of glass view

LiveNX MoM provides a single-pane-of-glass for server settings, system health, sites and configuration aggregating multiple geographical or organizationally segmented LiveNX domains. Through an aggregation layer, each LiveNX server domain instance injects relevant data for summary dashboard views and management by way of a north bound REST API. This is particularly helpful for Managed Service Provider (MSP) or larger enterprise environments with centralized operational management responsibilities within a NOC or IT Service Desk. The LiveNX MoM maintains the administrative separation between LiveNX domains while providing centralized provisioning of LiveNX users, discovery and scheduling reports for each of the LiveNX server domains.

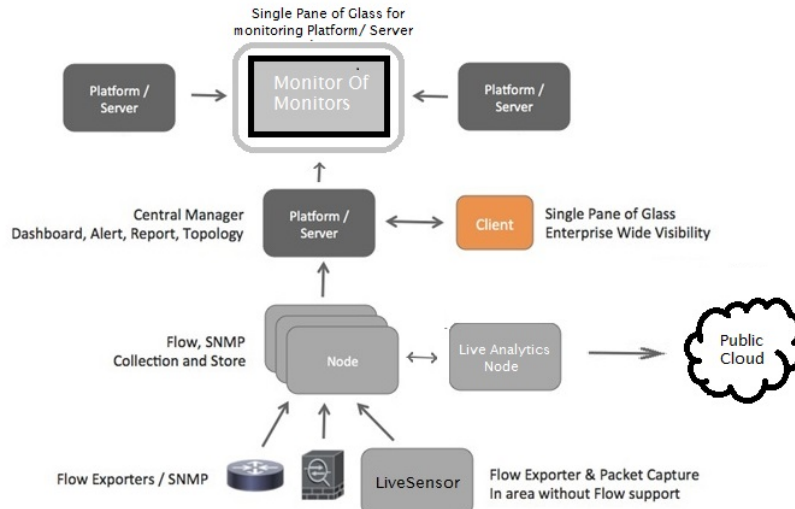


Figure 1: LiveNX 6.2.0 Architecture

The following figure shows how the Monitor of Monitors dashboard looks after deployment in the current release of LiveNX 6.2.0.

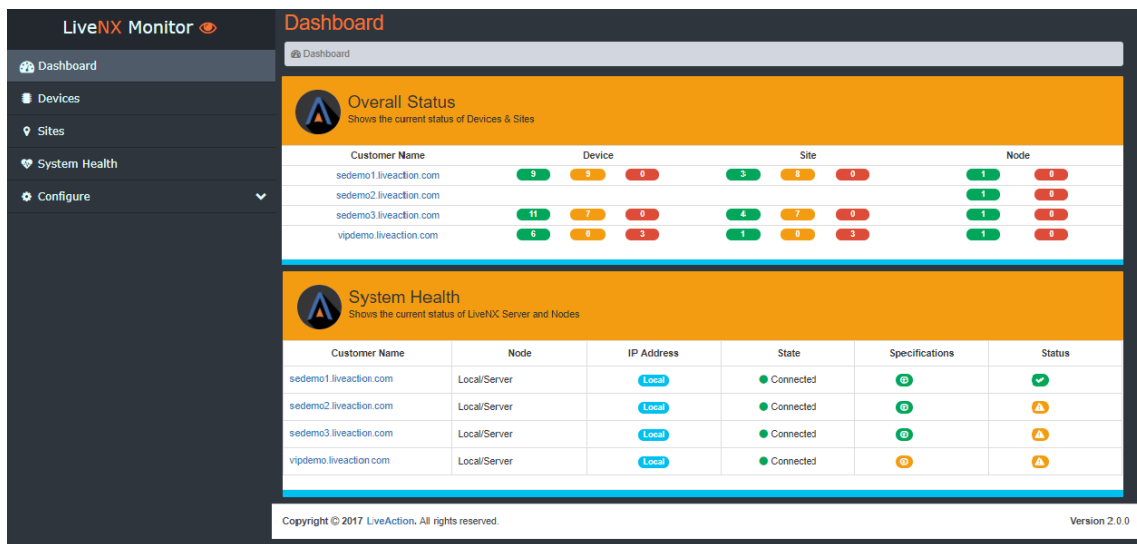


Figure 3: LiveNX 6.2.0 – MoM Dashboard

The summary dashboard provides

- Overall Status of all managed LiveNX Systems
- System Health
- Device and Site Information
- Configuration

If you have any questions about this guide, or need any assistance in general please contact LiveAction support: support@liveaction.com

Installation Guide

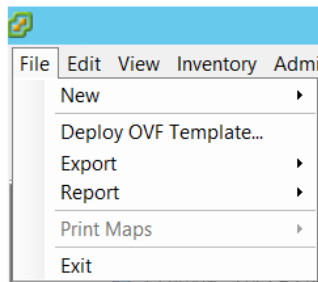
Customers can download the LiveNX-MoM OVA from the LiveAction download page along with the latest release. In this guide, we will provide step-by-step instructions on how to install and user guide of the LiveNX Monitor of Monitors.

Specs

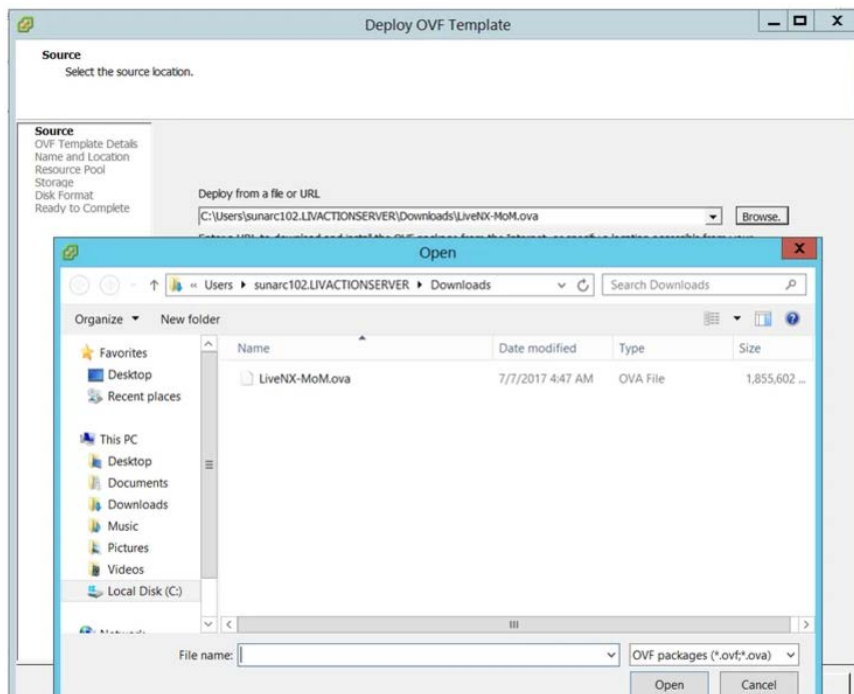
- CPU - 2 core
- RAM - 4 GB
- Hard Disk Drive - 30 GB

Installation in VMWare ESXi

Step 1: File → Deploy OVF Template



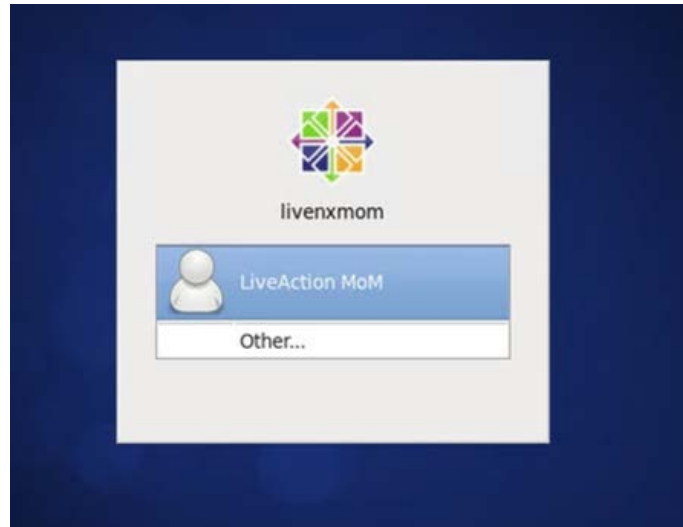
Step 2: Browse to LiveNX-MoM OVA file



- Step 3:** Click → Next → Choose VM name → Next → Select Server → Next
Step 4: Select the storage → Next → Disk Format → Next → Network Selection → Next
Step 5: Ready to Complete → Finish → Power on after deployment

Note: Deployment will take 1 - 5 minutes, As MoM is running in Cent OS 6.8

- Step 6:** After power on, we should be able to see login screen appears



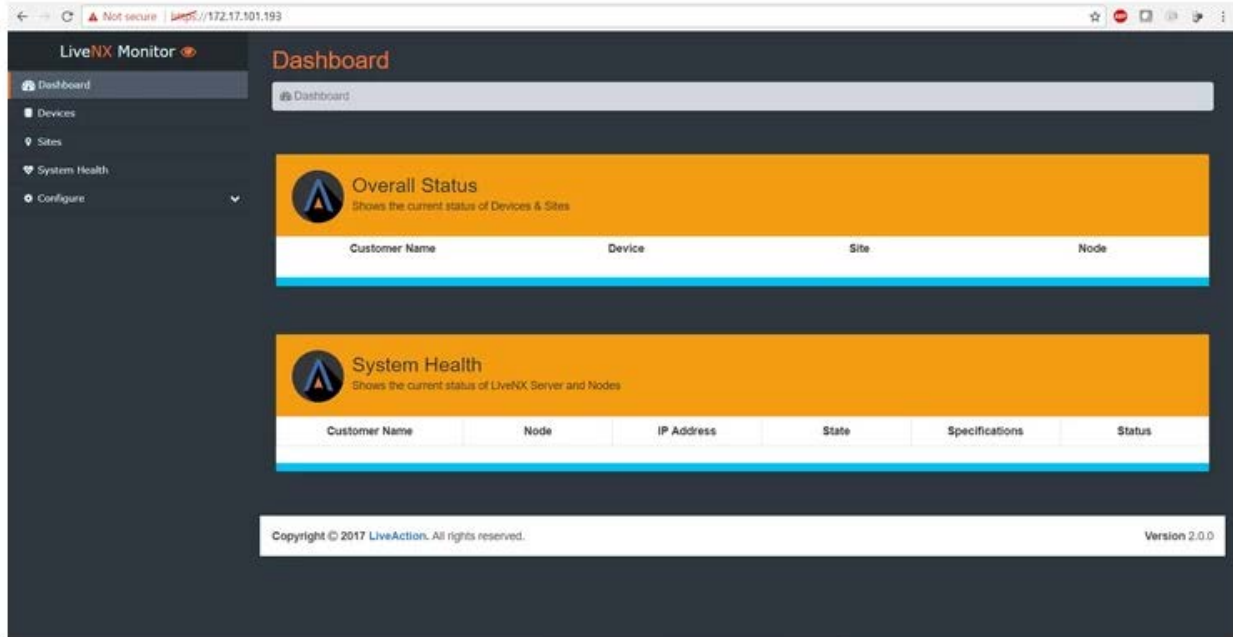
- Step 7:** Login as livenxmom/ change
Step 8: Open a terminal and check the IP address of the system

```
livenxmom@livenxmom:~/Desktop
File Edit View Search Terminal Help
[[livenxmom@livenxmom Desktop]$ ifconfig
eth1    Link encap:Ethernet  HWaddr 00:50:56:9D:0D:E3
        inet addr:172.17.101.193  Bcast:172.17.101.255  Mask:255.255.255.0
        inet6 addr: fe80::250:56ff:fe9d:de3/64 Scope:Link
        UP BROADCAST RUNNING MULTICAST  MTU:1500  Metric:1
        RX packets:14637 errors:0 dropped:0 overruns:0 frame:0
        TX packets:22 errors:0 dropped:0 overruns:0 carrier:0
        collisions:0 txqueuelen:1000
        RX bytes:969415 (946.6 KiB)  TX bytes:2174 (2.1 KiB)

lo      Link encap:Local Loopback
        inet addr:127.0.0.1  Mask:255.0.0.0
        inet6 addr: ::1/128 Scope:Host
        UP LOOPBACK RUNNING  MTU:65536  Metric:1
        RX packets:477 errors:0 dropped:0 overruns:0 frame:0
        TX packets:477 errors:0 dropped:0 overruns:0 carrier:0
        collisions:0 txqueuelen:0
        RX bytes:49255 (48.1 KiB)  TX bytes:49255 (48.1 KiB)

[[livenxmom@livenxmom Desktop]$ █
```

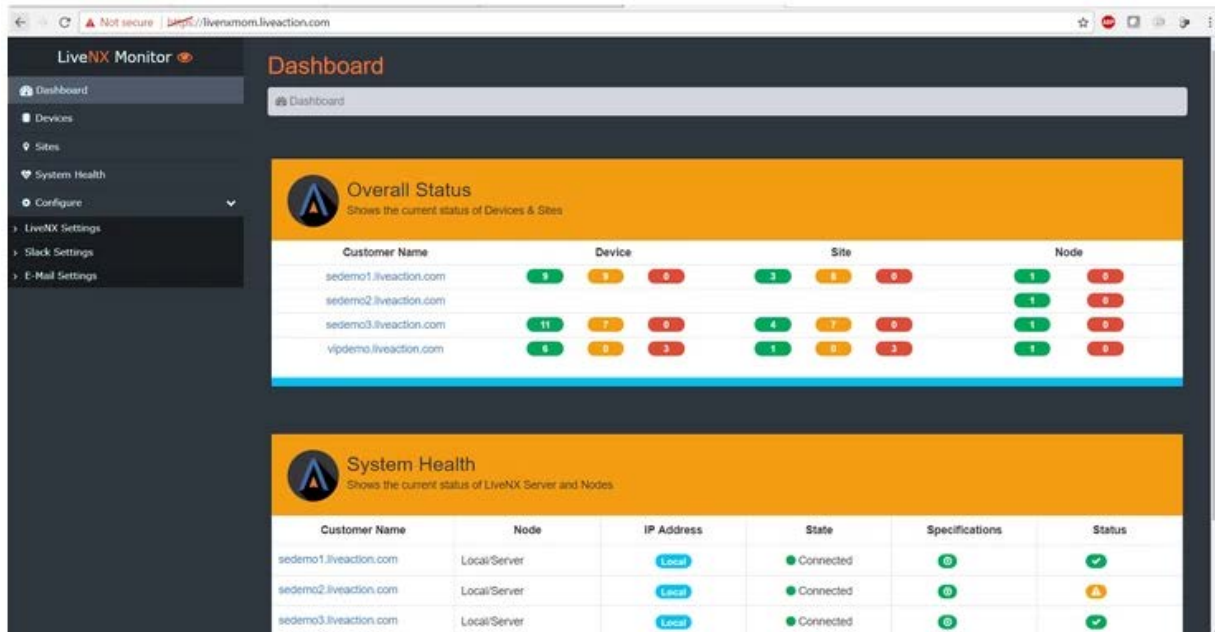
Step 9: We should be able to browse the LiveNX MoM in the displayed IP address



Step 10: Follow the 6.2.0 LiveNX MoM User Guide section below to setup and configure the MoM.

LiveNX MoM – User Guide

- Step 1:** In this example, the IP address of the LiveNX MoM IP: 172.17.101.193
- Step 2:** Login into LiveNX UI from browser as <https://172.17.101.193> or is the user as a FQDN setup, user can enter the FQDN name, in this example we have used <https://livenxmom.liveaction.com/>

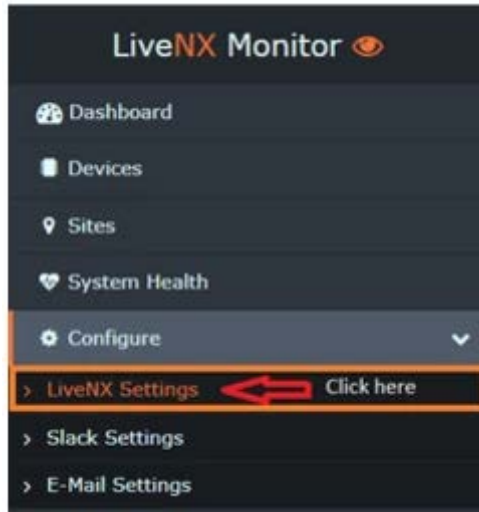


This shows the main dashboard view of the Monitor of Monitors. One the overall status user can have a single view of all the Customers registered to the LiveNX MoM system.

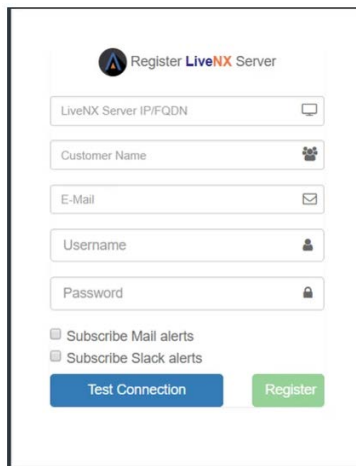


Add a LiveNX Server to MoM

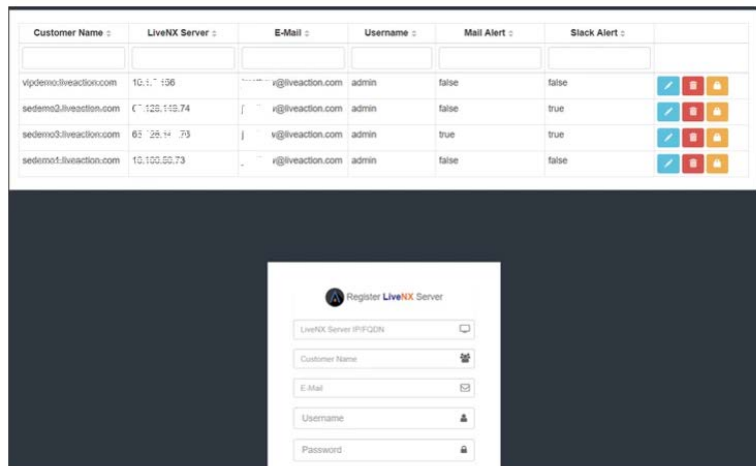
Step 1: Navigate to Configure → LiveNX Settings in the Side menu



Step 2: Fill in the required fields, to add the LiveNX Server in MoM.



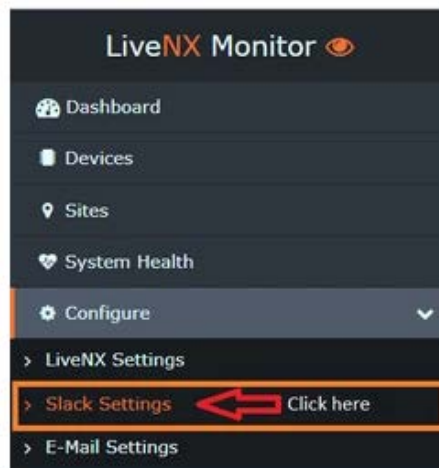
Step 3: LiveNX server IP/FQDN accepts only IP address in this release, user can use multiple e-mail id separated by semi-colon - ; (or) comma - , Input the username and password and click on test connection. Once, test successful Register button will be enabled. Use Register button to register the LiveNX Server in MoM.



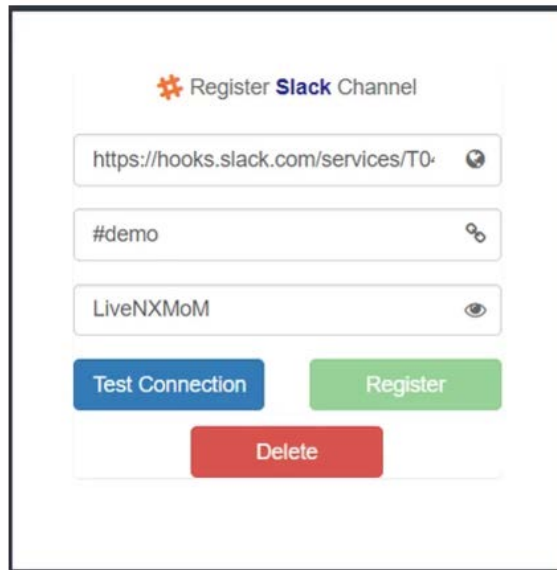
- Step 4:** Registered servers will be displayed in the table above.
- Step 5:** Edit or delete of LiveNX instances can also be done.
- Step 6:** User can edit the existing LiveNX server Customer name, IP Address, Mail, subscription of alerts.
- Step 7:** We can delete the LiveNX from monitor by clicking on the delete button.
- Step 8:** To change the username/password of existing server, user must delete the server from monitoring and re-add the server with new credentials.

Adding slack channel to MoM

- Step 1:** Navigate to Configure → Slack Settings in the Side menu



- Step 2:** Fill in the required fields, to add the Slack Channel in MoM.



Register Slack Channel

https://hooks.slack.com/services/T0...

#demo

LiveNXMoM

Test Connection Register

Delete

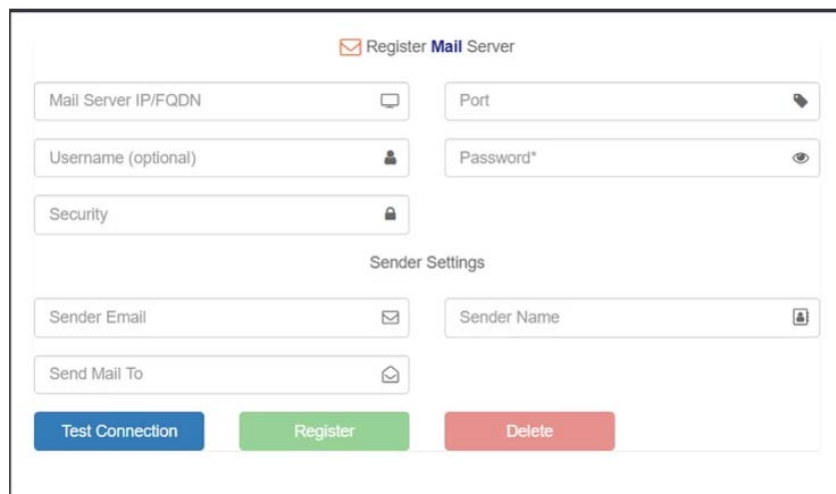
Step 3: Enter the Web hook URI provided by Slack, Select the channel to post the alert (Optional). Provide name for the bot and click on test connection. Once, test connection successful we will be able to register the slack in MoM. We can delete the slack only when it is configured.

Adding email configuration

Step 1: Navigate to Configure → E-Mail Settings in the Side menu



Step 2: Fill in the required fields, to add the email configuration in MoM

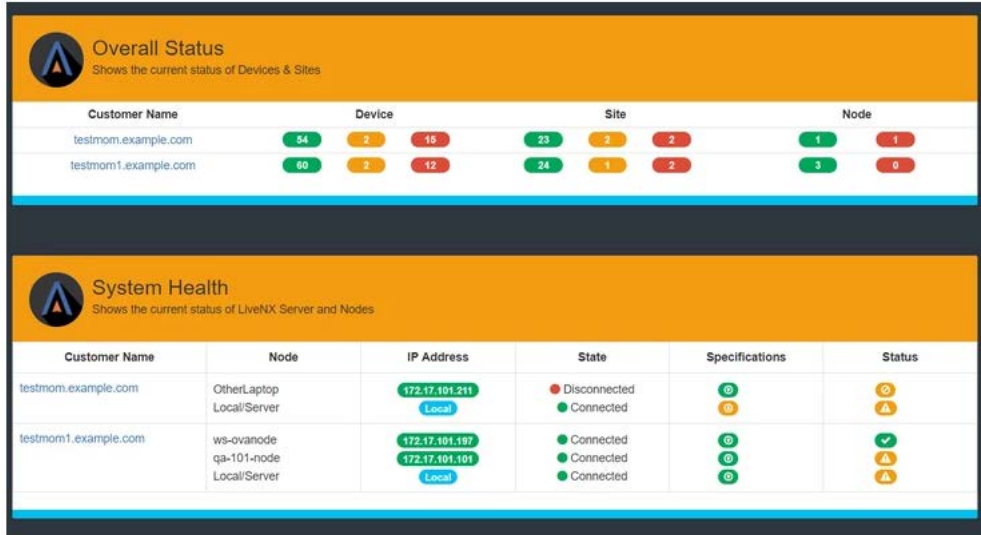
A screenshot of the "Register Mail Server" form. The form has a title "Register Mail Server" with an envelope icon. It contains several input fields: "Mail Server IP/FQDN" (with a copy icon), "Port" (with a dropdown arrow), "Username (optional)" (with a user icon), "Password*" (with an eye icon), "Security" (with a lock icon), "Sender Email" (with an envelope icon), "Sender Name" (with a user icon), and "Send Mail To" (with an envelope icon). At the bottom, there are three buttons: "Test Connection" (blue), "Register" (green), and "Delete" (red).

Step 3: After filling the mandatory fields, we can click on Test Connection. If test connection successful, register button will be enabled. After registration, successful delete will be enabled. User can delete the mail configuration by clicking on delete button

Monitor of Monitors Dashboard

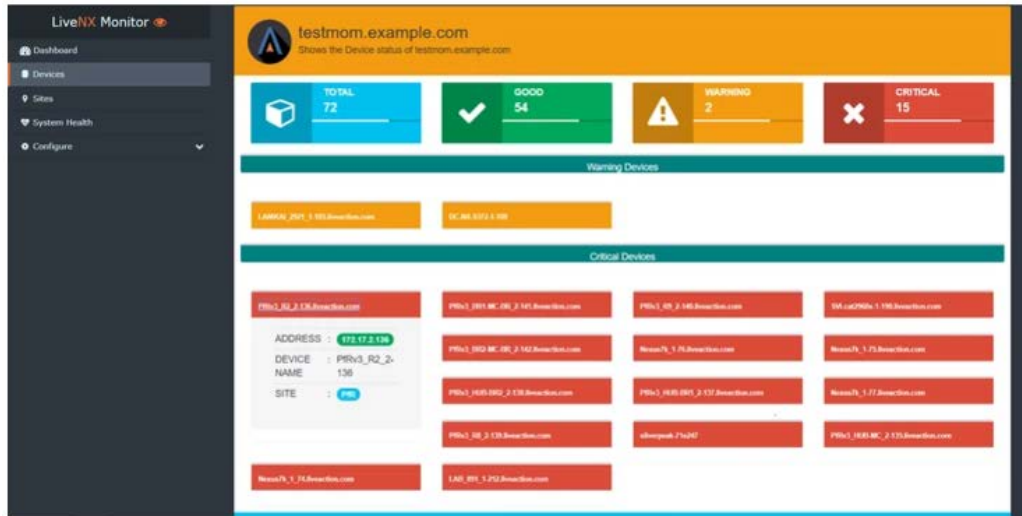
Dashboard

- Step 1:** Navigate to Dashboard in the Side menu, landing page of MoM is Dashboard by default
- Step 2:** Dashboard displays the overall status and health of the LiveNX Servers and Nodes connected.
- Step 3:** Adding LiveNX Server will start monitoring its nodes as well.



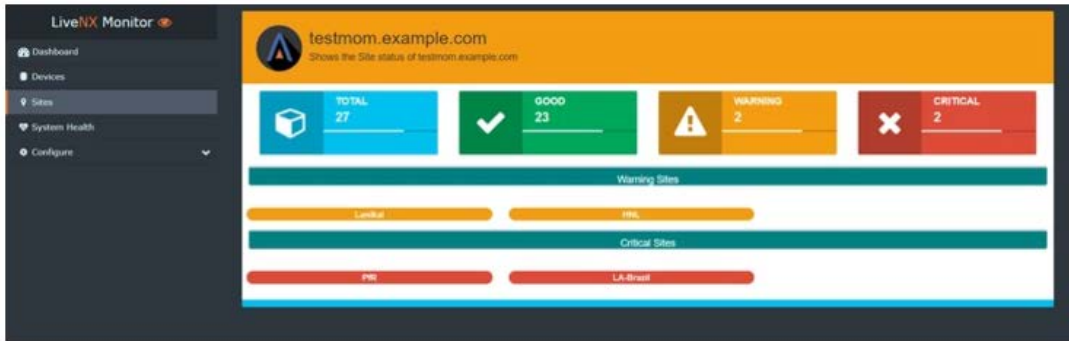
MoM Devices:

- Step 1:** Navigate to Devices in the side menu
- Step 2:** Devices pages displays the warning and critical devices, user must click on each device to verify the device address and site.



MoM Sites:

- Step 1:** Navigate to Sites in the side menu
- Step 2:** Sites page displays the warning and critical sites.



MoM System Health

- Step 1:** Navigate to System Health in the side menu
- Step 2:** System health page will display complete health information of LiveNX Server configured

